



Tech Talk

April 15, 2026



Accessing Interpretation



How to access interpretation:

1. Click on the globe icon labeled "Interpretation" at the bottom of your Webex window.
2. Select your preferred language from the list.
3. If you only want to hear the interpreter, you can also click "Mute Original Audio."

Cómo acceder a la interpretación:

1. Haga clic en el ícono del globo etiquetado como "Interpretación" en la parte inferior de su ventana de Webex.
2. Seleccione su idioma preferido de la lista.
3. Si solo desea escuchar al intérprete, también puede hacer clic en "Silenciar audio original."

Overview | Early Childhood Services can be less burdensome, more efficient and equitable



Children and families experience difficulties with inputting the **same info** repeatedly, deciphering **eligibility requirements**, and accessing **resources**



Providers spend too much time on **administration** and experience **challenges** with sustaining **multiple state funding streams**



State cannot track **funding for providers** across multiple streams, deliver **services equitably** and **efficiently**, and view **services a single child** accesses or does not access

★ North Star

Illinois is on a path to be the best state in the country to raise a family with young children

📍 Short-term goal

Ensure seamless transition of services for parents & providers

🎯 Agency redesign priorities

- 1 Align programs and program standards toward kindergarten readiness
- 2 Bring data transparency to deliver equity and efficiency
- 3 Design 0-3 services to support families in the most critical years
- 4 Licensing & regulatory processes support the rich diversity of families and providers that serve them
- 5 Align funding streams at the state level, relieving complexity from local and shifting to the state

Early Education & Care Services will Move, Broader Family & School Support

Will Remain at Transferring Agencies

IL Dept. of Human Services

- Child Care
- Migrant & Seasonal Head Start
- Head Start Collaboration Office
- Early Intervention
- Home Visiting
 - State Home Visiting
 - MIECHV
 - Maternal Child Home Visiting

- Better Birth Outcomes
- Family Case Mgmt.
- High Risk Infant Follow Up
- Refugee & Immigrant Services
- SNAP
- WIC
- TANF

IL State Board of Education

- Early Childhood Block Grant
 - Preschool for All (PFA)
 - Preschool for All Expansion
 - Prevention Initiative (PI)

- K-12 Evidence Based Funding
- Special Ed.
- Nutrition
- Title I CACFP / School Lunch
- KIDS Assessment

- Early Childhood Special Education (ECSE)*

IL Dept. of Child & Family Services

- Child Care Licensing

- Child Protective Services
- Adoption & Guardianship
- Institution and Group Home Services
- Investigative Services

GOECD

- Infant and Early Childhood Mental Health (IECMH)

ILDS

- Illinois Longitudinal Data System Reboot

Key

Program Staying

Program Moving

**Program not included in the initial legislative package. Additional discussions with USDOE and state stakeholders are needed to identify the best approach to support children and families moving forward.*

Welcome

IDEC Tech Vision

Deliver secure, modern solutions that improve experiences and access to essential services for families

Objectives:

- Share progress on IDEC's digital transformation and preview new tools.
- Gather actionable feedback from families, providers, agencies, partners, and staff.
- Build transparency, engagement, and support for upcoming releases.
- Host internal and public Tech Talks with clear demos, Q&A, and feedback opportunities.

Our Tech Talks aim to promote transparency in our transformation efforts for early childhood. We seek early and continuous questions and feedback to guide the work and ensure the best results for the Illinois early childhood community.

Successful transition will involve three elements...

> People

> Process

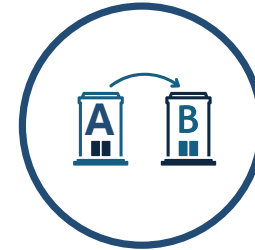
> Technology

...and each element is bucketed into one of three transition categories



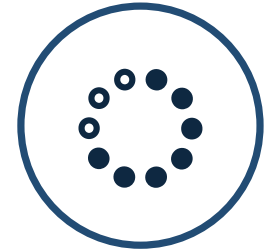
**Redesign, reform,
and modernize**

Enhance outdated processes or systems to align to future needs, introducing new solutions where necessary for best-in-class results



Lift, shift, & integrate

Seamlessly move existing processes, systems, & people into new environment to align with its vision & minimize disruption



**Temporarily retain
with transferring
agencies**

Delay transition for selected functions, keeping them with the current agency until resources or dependencies are satisfied

Who You'll Hear From



Felicia S Gray
IDEC
Tech Organizational
Change Management Lead



Jessica Morris
IDEC
Chief Information Officer



Ruby James
IDEC
EUNA Project Lead

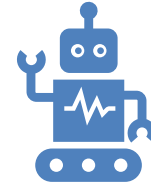


Thomas Bazan
IDEC
Chief Financial Officer



Thomas Colgrove
EUNA Grants

IDEC Monthly Tech Talks



Our Tech Talks aim to promote transparency in our transformation efforts for early childhood. We seek early and continuous questions and feedback to guide the work and ensure the best results for the Illinois early childhood community.



Transformation Updates



Live Q&A



Recorded Demos



Progress to Goals

IDEC Tech Vision

Deliver secure, modern solutions that improve experiences and access to essential services for families



MAR

Childcare Finder



APR

Grants



MAY

Licensing



JUN

Data Hub



JUL

Subsidy

Meeting Norms



Process is a part of the solution.



This is a demo and not a training session.



Seek to understand – submit your questions and comments in the Q/A box.



Accept that not all questions will be answered immediately, but there is a commitment to closing feedback loops.



Prioritize parent and provider experience.

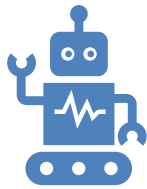


Recognize the difference between intent and impact.

Who's in the Room?

- Please add your name, county, and role in the chat!
- If you could wake up tomorrow with a new hobby, what would it be?





Recap: March Tech Talk - Finder (Wonderschool System)



Internal: March 10th

Attendance: Highest count **173** attendees

Questions received: 12

Mixture of Provider focused Finder, Program, Tech
Governance

External Tech Talk: March 11th

Attendance: Highest count **198** attendees

Questions received: 66

Mixture of Finder, Program, Policy

Post Session Survey Results: 22 Compiled Surveys Received

Positive Feedback Received

- ✓ People feel more informed about how the state is improving early childcare services with technology
- ✓ People had many of their questions answered about the technology projects
- ✓ People felt like the tech talk was engaging and a good way to share this information
- ✓ People would like to attend more tech talks in the future

Top Three Questions and Answers from March Tech Talk

Q: Will providers have to set up their own provider information in Wonderschool? What about the providers that are not tech savvy?

A: We are working with our technology and governance team to determine what will automatically be populated. The current intention is for providers to enter in their information. We will prepare very thorough and detailed training and videos so providers can get the first look and feel of how it works. A support plan is being developed for providers, families and Child Care Resource and Referral organizations.

Q: What Determines the order of the programs on the search. What comes first?

A: An algorithm drives the ranking on the search results. The top factors are Distance – (ex. The closest programs to the zip code entered by a family), and Actual Availability – (ex. Because we want families to be able to find care quickly and with efficiency).

Q: Will providers be required to use Wonderschool to enroll new families?

A: No, providers can continue to use whatever CCMS software they're using today to manage their enrollments. The finder serves the purpose of helping parents find providers quickly to go through the next steps to secure care.

EUNA Grants powered by Amplifund Overview

- EUNA Grants is an enterprise grant management system--it is designed to work:
 - a) from the start of the process through the end of the process as a one-stop-shop for all grant administration needs; and
 - b) for all Illinois state agencies, connecting with other parts of the grant process (such as the CSFA system)
- Contract started in 2018 and is a long-term partnership with Illinois
- EUNA Solutions bought AmpliFund in 2025, rebranding the software as EUNA Grants
- At IDEC we are configuring the software to include all major parts of the grant administration process--including pre-award; award; and post-award.

EUNA Grants powered by Amplifund - Overview



WIIFM – Why?

- Less paper to speed up processing
- System easier to use
- All data stored in one place
- Reporting available from submitted information

Resources

- Trainings and Manuals (Vidyard)
- Zen Desk (EUNA)
- Questions.IDEC@illinois.gov
- Weekly email
 - FAQs and calendar
 - Links to training materials
- IDEC Program Staff
- IDEC Fiscal Staff (Funding)

Early Childhood Grant Management Consolidation: EUNA Update

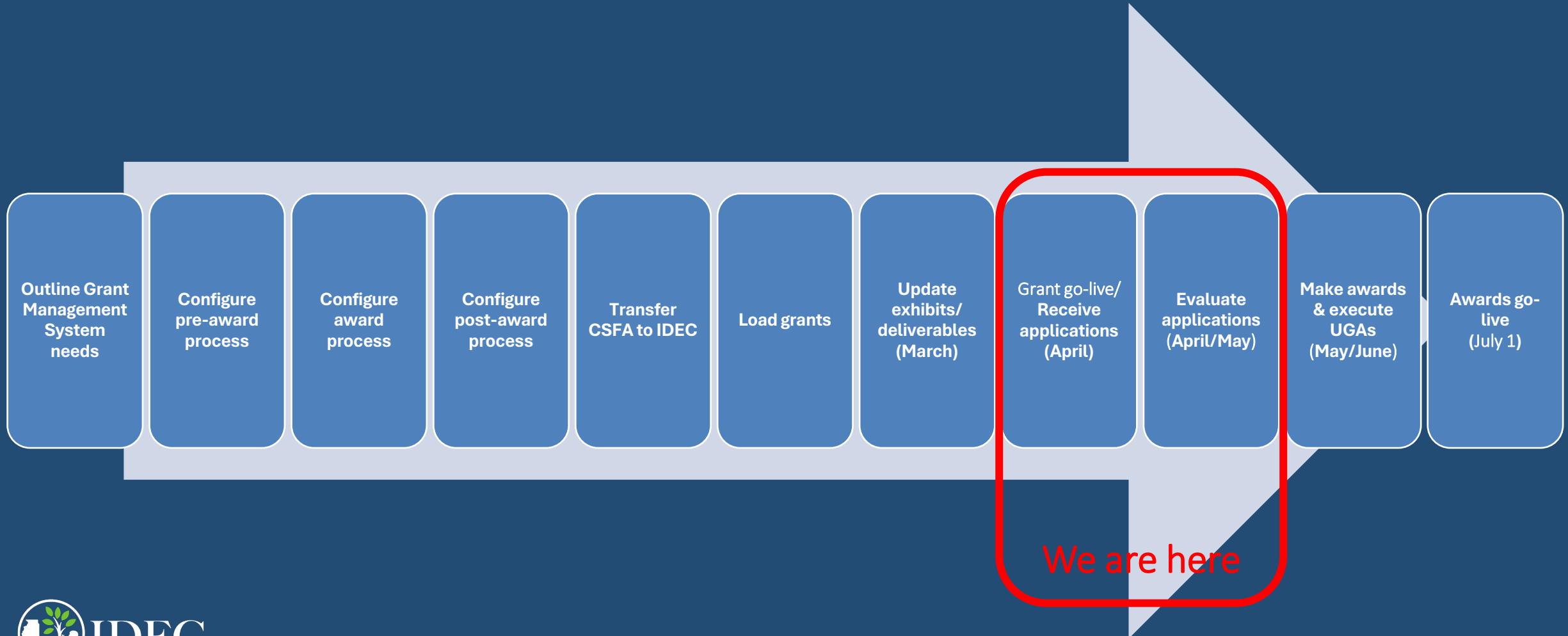
IDEC is consolidating early childhood grant management services from DHS and ISBE into a single, modernized system.

Pre Award	Evaluation & Review	Award	Post Award	Data and Reporting
Activities before funding is granted, including proposal development and submission	Assessment of the application for eligibility, quality, and alignment with grant criteria	Formal notification and acceptance of funding, including agreement on terms and conditions	Implementation of the funded project, managing compliance and financial oversight	Collection and analysis of financial reports and other grant-related data

Release 1 Go Live April 1 - **Successful**
 Release 2 around April 15

One Stop Shop

Setting up a system for grantees



One Stop Shop

Next steps for start to finish for grantees

Establish
Advance
Payments
(June/July)

Expense
Submissions
(July ongoing)

Establish payment
schedules (when
applicable)

Reimbursement
beginning in
July/August

Continued
communication
throughout the
year

Quarterly
reporting for PPR
and PFR reports
in EUNA

Federal reporting
requirements
(quarterly or
semiannually)

Prepare for FY28
(Spring 2027)

Applications for
FY28 go live
March/April
2027

EUNA Grants powered by Amplifund Demo



Why Euna Grants?

One grant platform. Every agency. Every recipient. From application to closeout.

State Integrations

Euna Grants isn't a standalone tool — it's wired directly into the State of Illinois core infrastructure. CSFA, GATA, ERP/SAP, IOC, and SSO all connect seamlessly, so your data flows where it needs to with less manual effort or duplicate entry.

One Grant Platform

From applying to an opportunity to submitting your final closeout report, everything lives in one system. Less jumping between portals and fewer paper-based handoffs.

Across Multiple Agencies

Whether you receive funding from IDEC, DNR, ISP, IEMA, or any of the 24 agencies on the platform, the process is similar. Apply, track, report, and get paid in the same system — regardless of which agency is funding you.

STATE SYSTEM INTEGRATIONS

CSFA

Catalog of State Financial Assistance — opportunity data synced automatically into Euna Grants

GATA Grantee Portal

Grantees register through a single unified portal

Single Sign-On (SSO)

Secure access across all connected state systems

ERP / SAP

Contracts and payments flow directly through the state enterprise financial system

IOC

Illinois Office of the Comptroller — payment authorization fully integrated

ILLINOIS BY THE NUMBERS (SINCE 2019)

24

State Agencies Live

974

Opportunities Posted

\$7.48B

Funds Requested

\$3.6B

Approved Award Requests

12,685

Applications Submitted

6,520

Activated Awards (\$3.63B)

EUNA Grants powered by Amplifund Demo

- [#1 Applicant Pre-Award Thomas IDEC](#)
- [#2 Provider Post Awards Thomas IDEC](#)
- [#3 Funder Post Award Thomas IDEC](#)



Tech OCM: News You Can Use!



- Questions.IDEC@illinois.gov is the inbox used to receive all business/program related questions related to both projects.

SHARE YOUR FEEDBACK!



[English Survey](#)



[Spanish Survey](#)

THANK YOU!



 @idec_illinois

 @IllinoisDepartmentofEarlyChildhood

 @Illinois Department of Early Childhood

www.idec.illinois.gov

