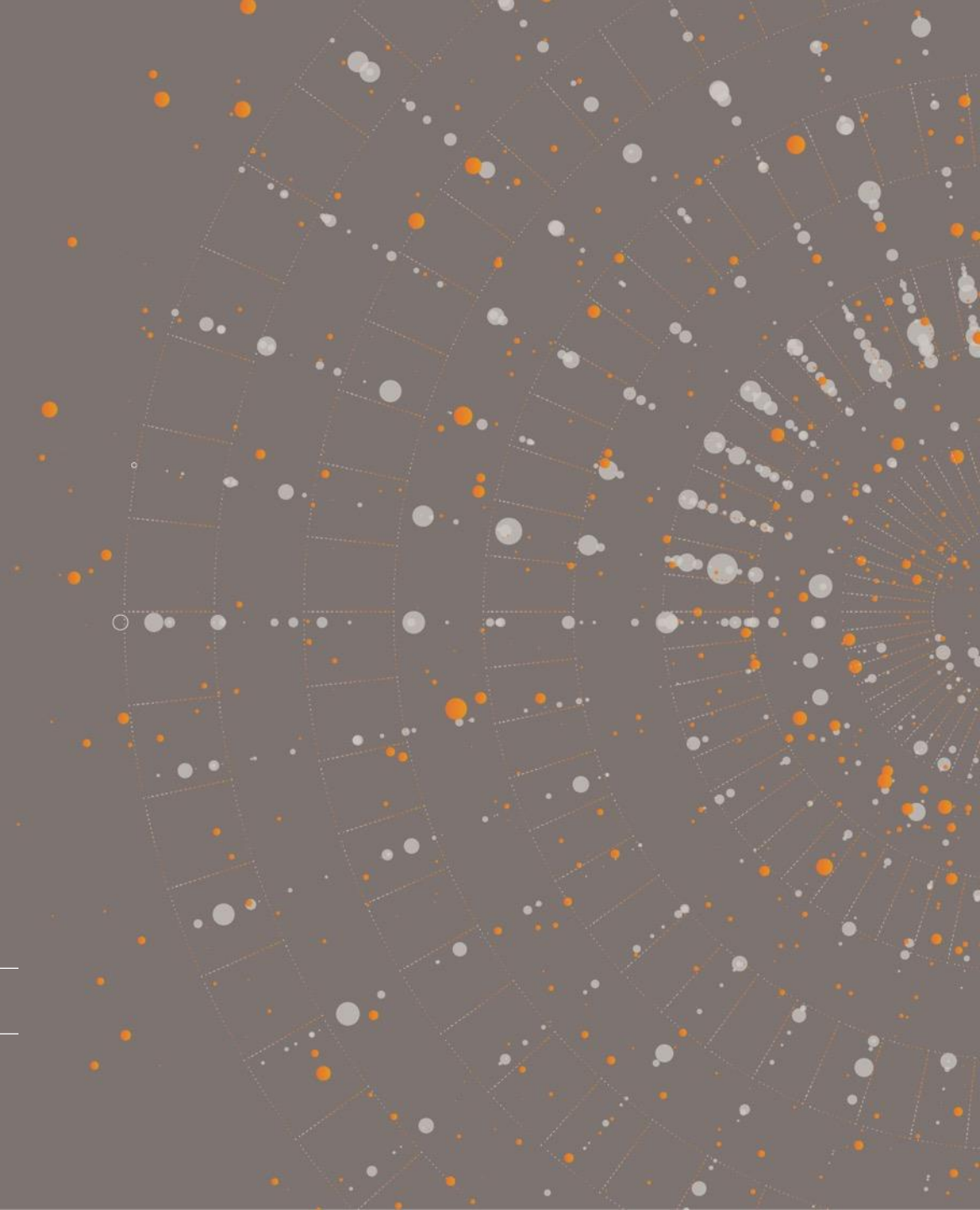


Assessing Patterns & Geographies of Childcare Subsidy Take-Up for Illinois

Presentation to ELC Executive Committee Meeting

April 28, 2025

Bob Goerge, Leah Gjertson, Nick Mader & Hyein Kang



Acknowledgements

- The presented work utilizes data from the Division of Early Childhood, Illinois Department of Human Services. Its contents are solely the responsibility of the authors and do not necessarily represent the official views of the Illinois Department of Human Services.
- This project was supported by the Administration for Children and Families (ACF) of the United States (U.S.) Department of Health and Human Services (HHS) as part of a financial assistance award (Grant #: 90YE0225) with 100 percent funded by ACF/HHS. The contents are those of the author(s) and do not necessarily represent the official views of, nor an endorsement, by ACF/HHS, or the U.S. Government. For more information, please visit the ACF website, [Administrative and National Policy Requirements](#).
- This study work was completed by the authors while at Chapin Hall with the work supported by ACF Grant #: 90YE0225.



Understanding a program's reach requires bringing together:



Enrollment data

Administrative records of program participation



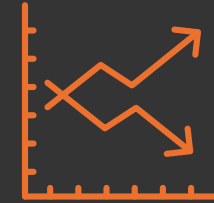
Program criteria

Including income/asset thresholds, children of qualifying ages, participation in work/education



Eligible population

Estimates of the program eligible population that are as precise as possible in count and geography



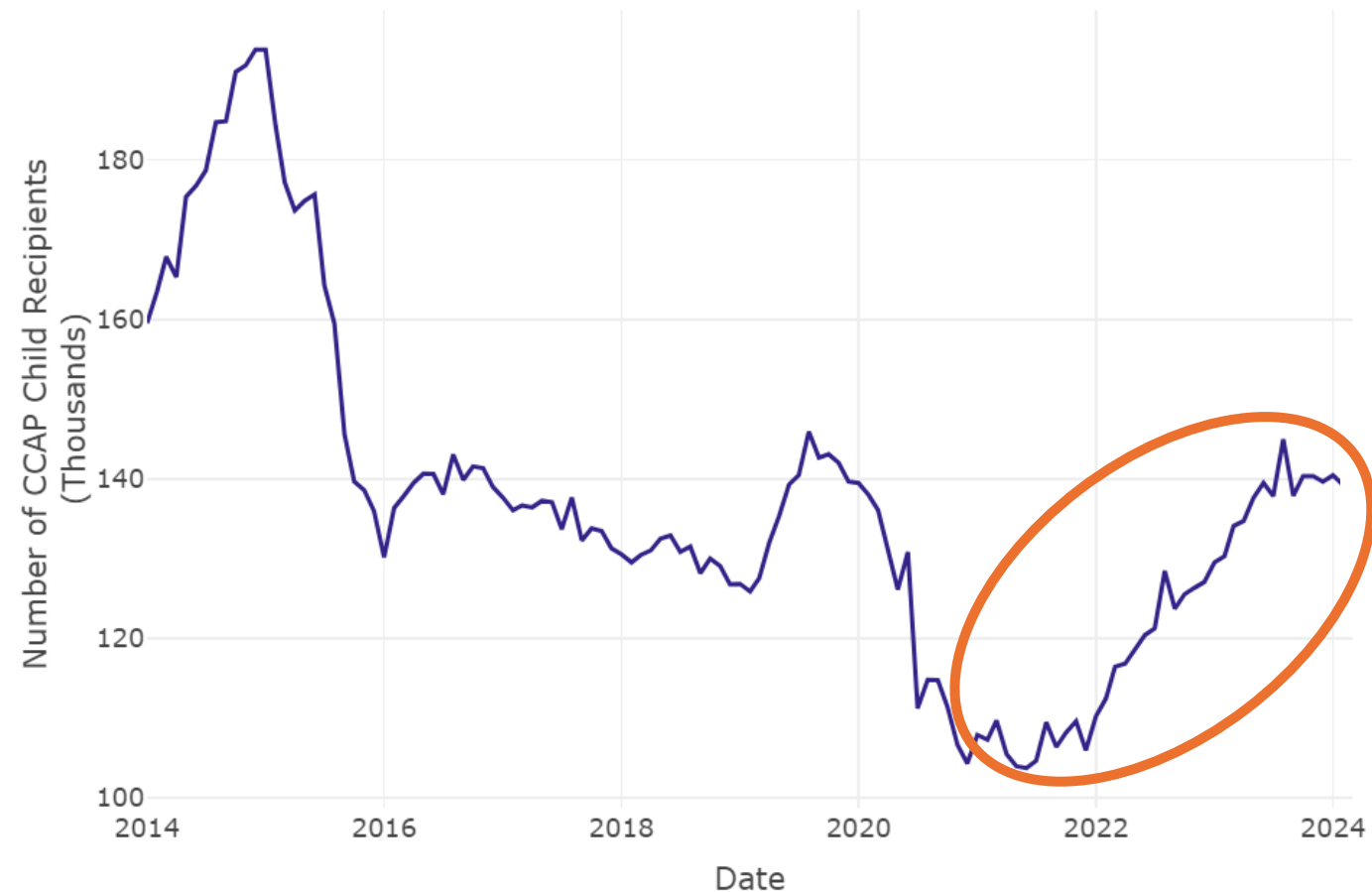
Longitudinal data

Enrollment, program criteria, and eligible populations are all ***dynamic over time***

Child Care Assistance Program (CCAP)

- Provides subsidies to make child care more affordable for eligible families
- CCAP eligibility:
 - Parent participates in qualifying employment and educational activities
 - Income below 225% of the Federal Poverty Level (FPL) at application (or below 275% FPL redetermination)
 - Children under age 13, also children ages 13–19 with documented special needs
- Our team developed an interactive data dashboard to display CCAP enrollment trends for IDHS

CCAP Overall Enrollment



Assessing Patterns & Geographies of CCAP Take-Up for Illinois

Child Care Assistance Program (CCAP) Take-up Rate

Take-up rate is defined as the number of children in a geographic region enrolled in CCAP divided by the estimated number of children eligible for CCAP in that same region. Take-up rate is reported as a percentage.

$$\frac{4 \text{ children enrolled in CCAP}}{10 \text{ children estimated as eligible for CCAP}} = 40\% \text{ CCAP Take-up Rate}$$

ELPEP Methodology

Estimating Local Populations Eligible for Programs

Goals for the ELPEP tool

- **Timely** so decisionmakers have the most current information possible
- **Transparent** so that users can understand what is being done
- **Comprehensive** to provide geographic detail
- **Responsive** to changing CCDF/CCAP policy
- **Flexible** to make it useful for other means-tested programs

ELPEP uses 3 US Census data sources to optimize



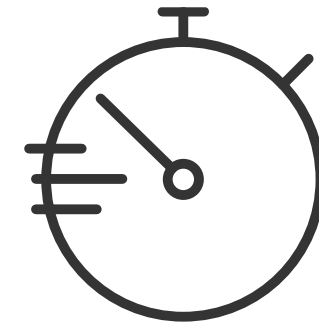
**Granular
geographic data**
(Census tract)

American Community Survey
5-year release (ACS5)



**Program eligibility
information**
(CCAP)

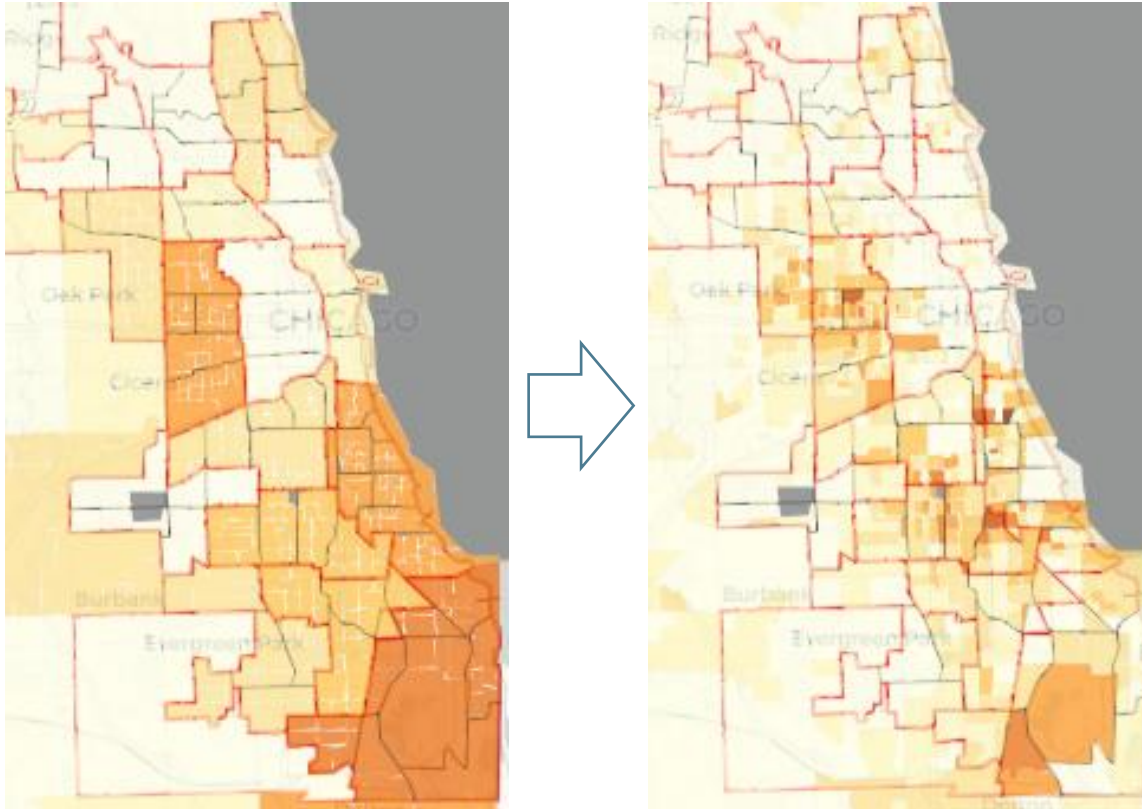
American Community Survey
1-year release (ACS1)



**Recency of
data**
(~2 months lag)

Current Population Survey
(CPS)

ELPEP Methodological Approach



Small Area Estimation Method
(get it local)

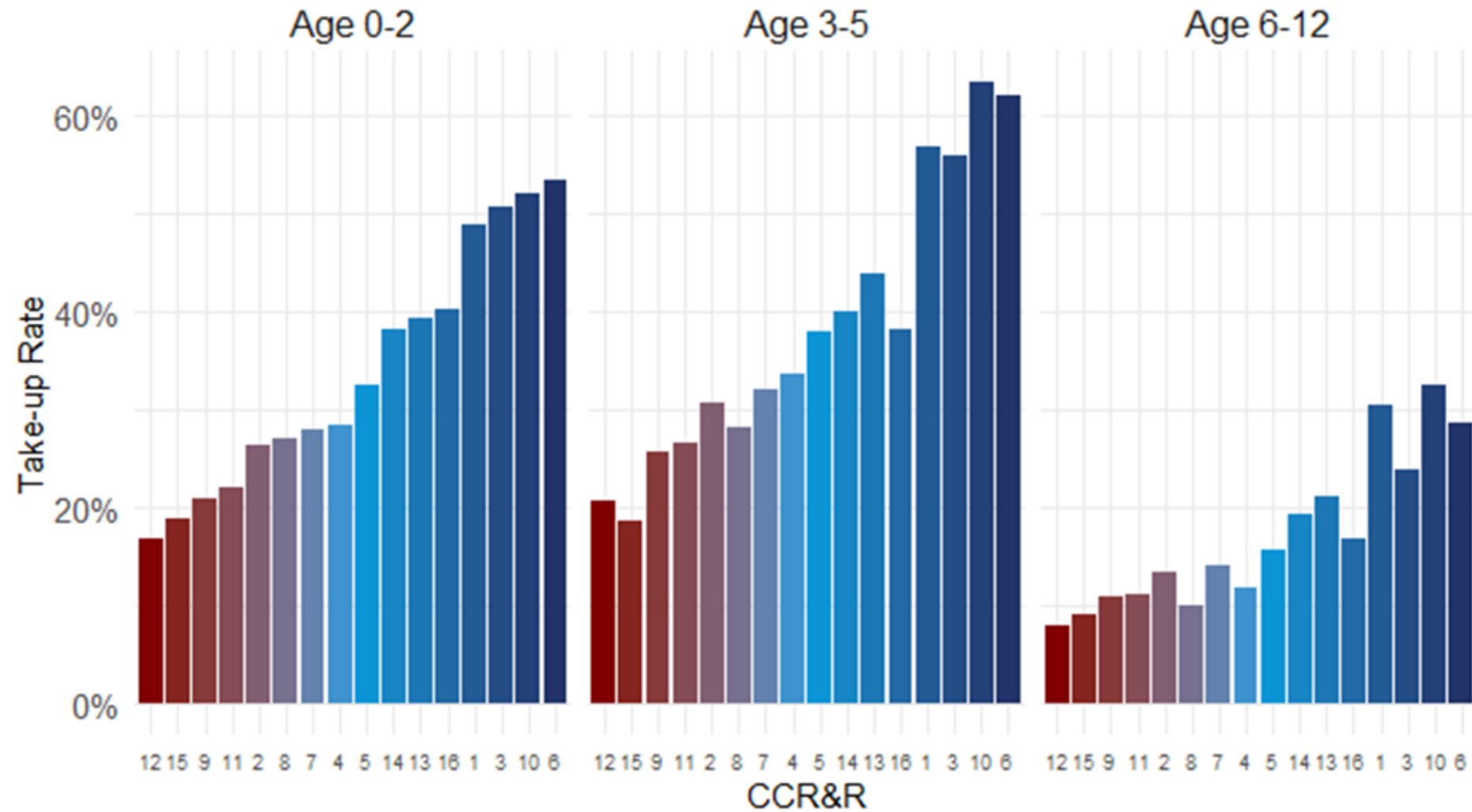


Now-Casting Method
(get it current)

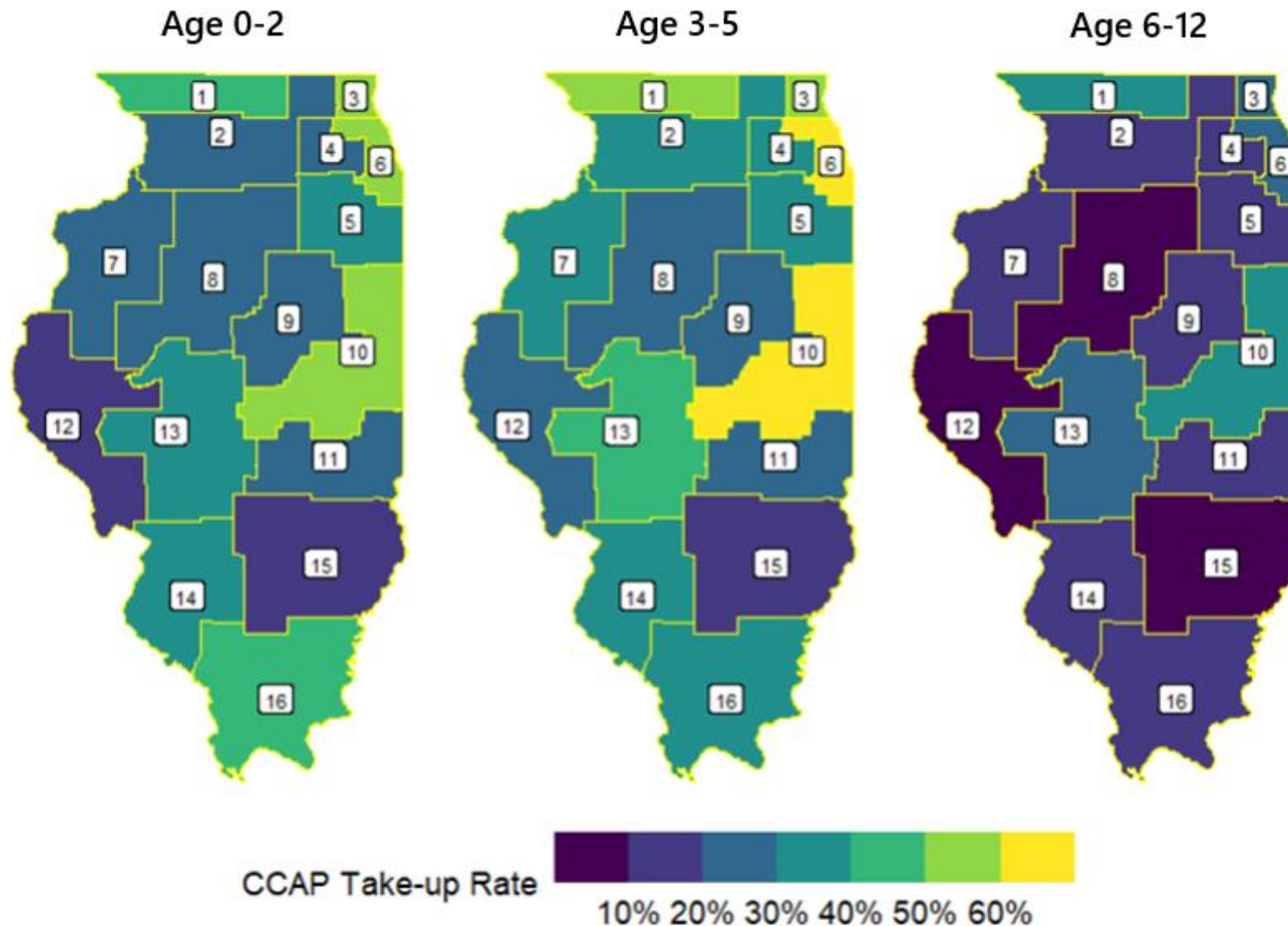
Findings

Illinois Child Care Subsidy Take-up, 2023

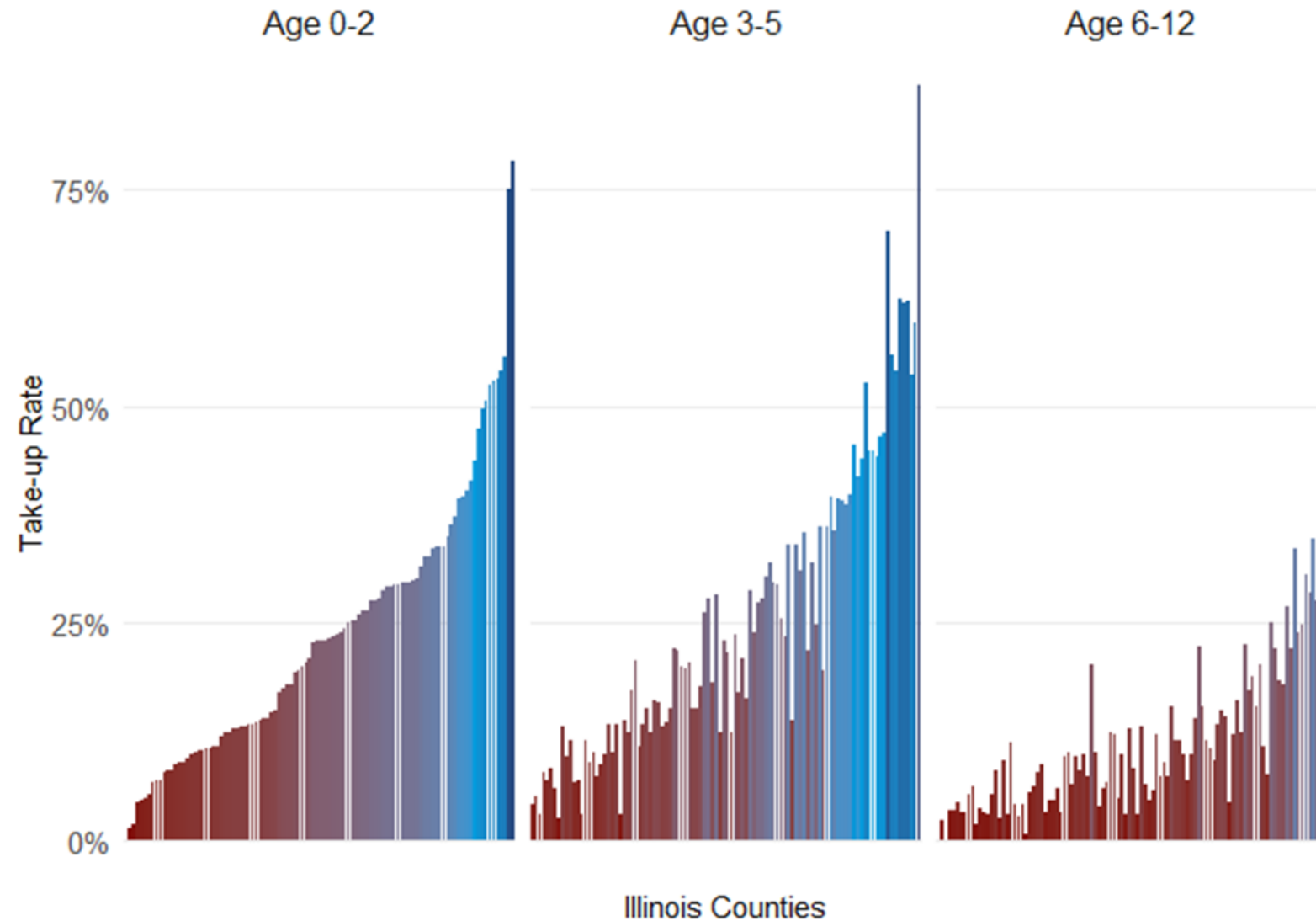
CCAP Take-up Rate by Child Age and CCR&R, 2023



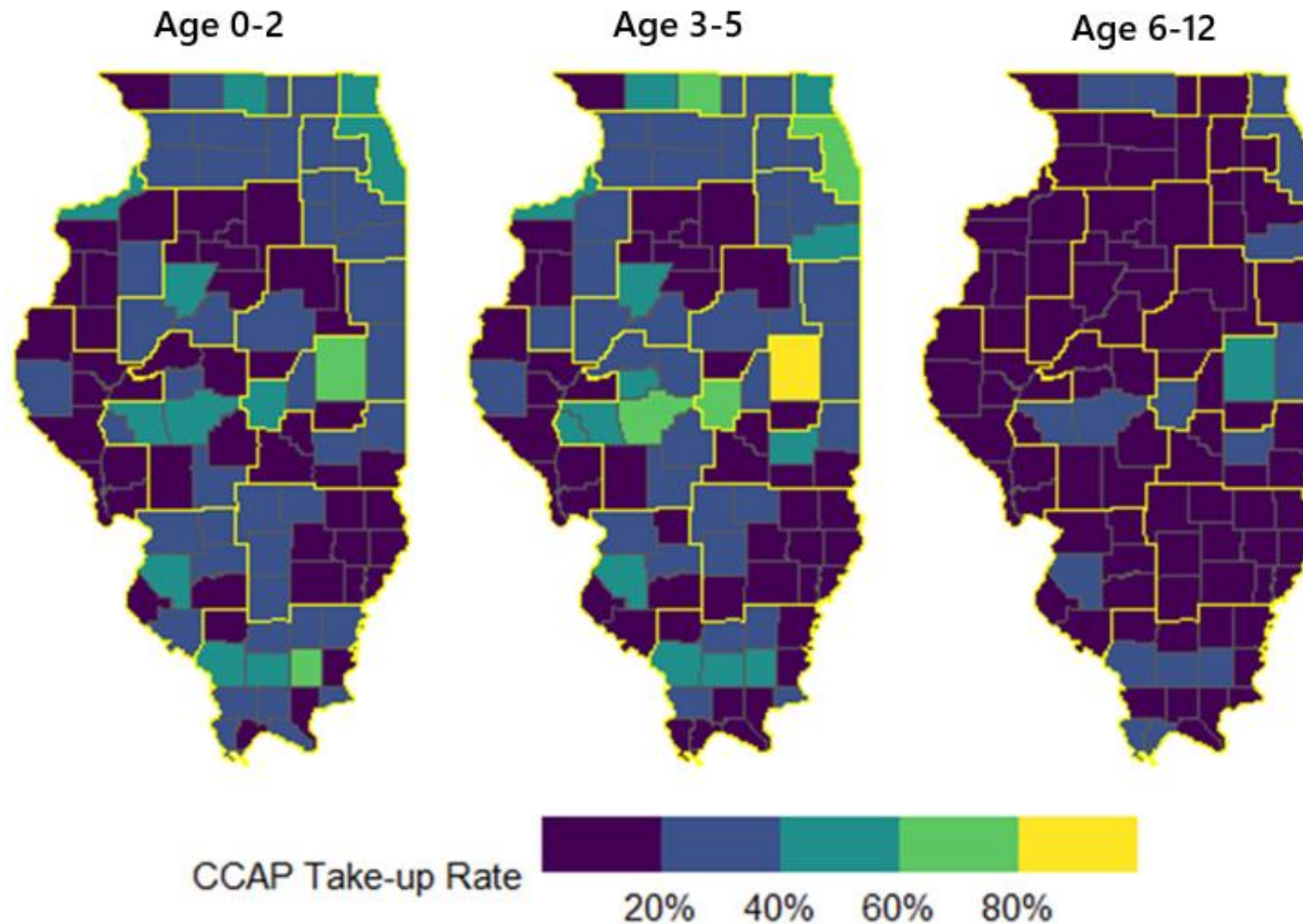
CCAP Take-up Rate by Child Age and CCR&R, 2023



CCAP Take-up Rate by Child Age and County, 2023



CCAP Take-up Rate by Child Age and County, 2023



CCAP Take-Up by Zip Code Characteristics, 2023...

...Majority Race/Ethnic
Composition

...English Language Proficiency

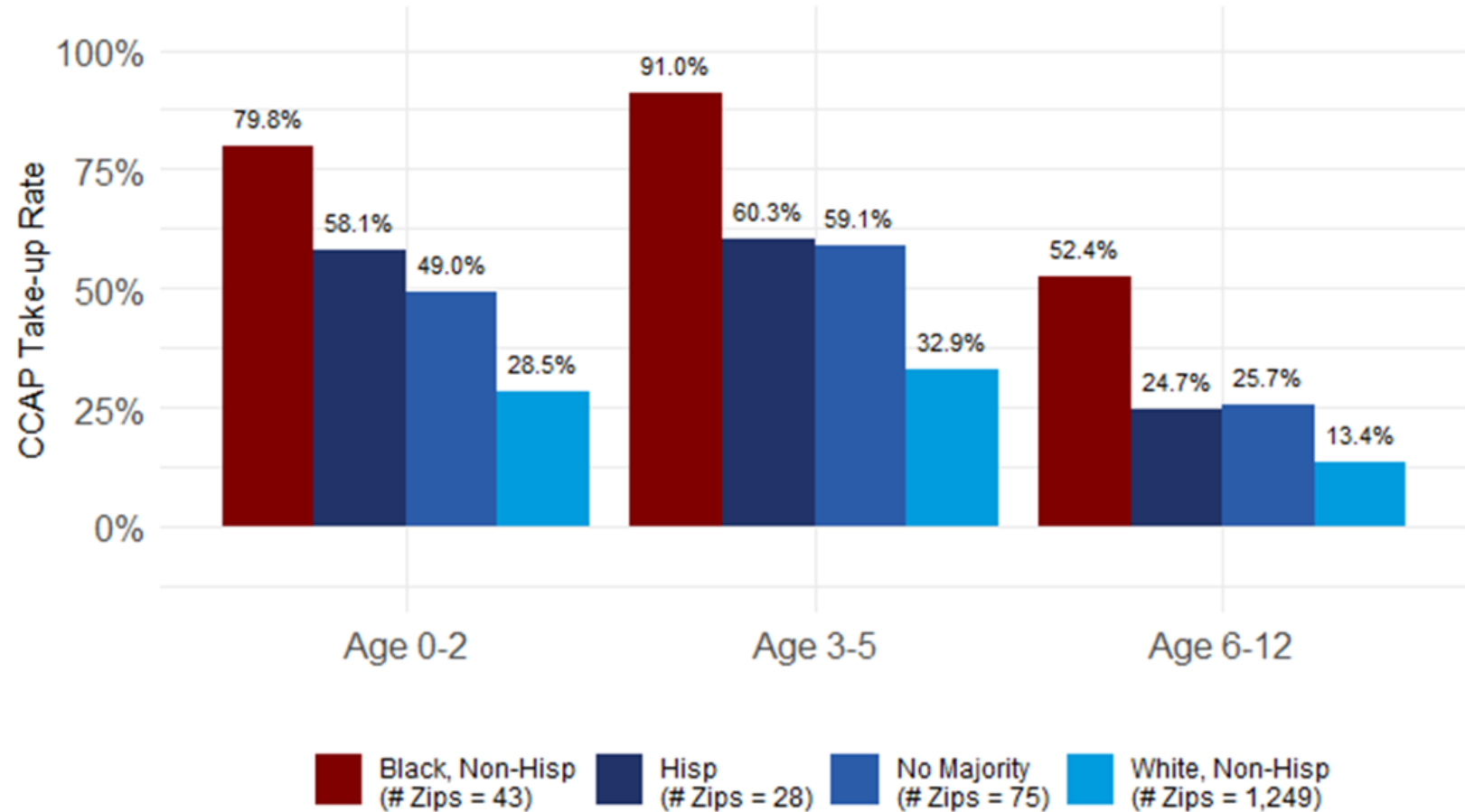
...Density of CCAP Eligibility

CCAP Take-Up by Zip Code Characteristics, 2023...

...Majority Race/Ethnic Composition

...English Language Proficiency

...Density of CCAP Eligibility

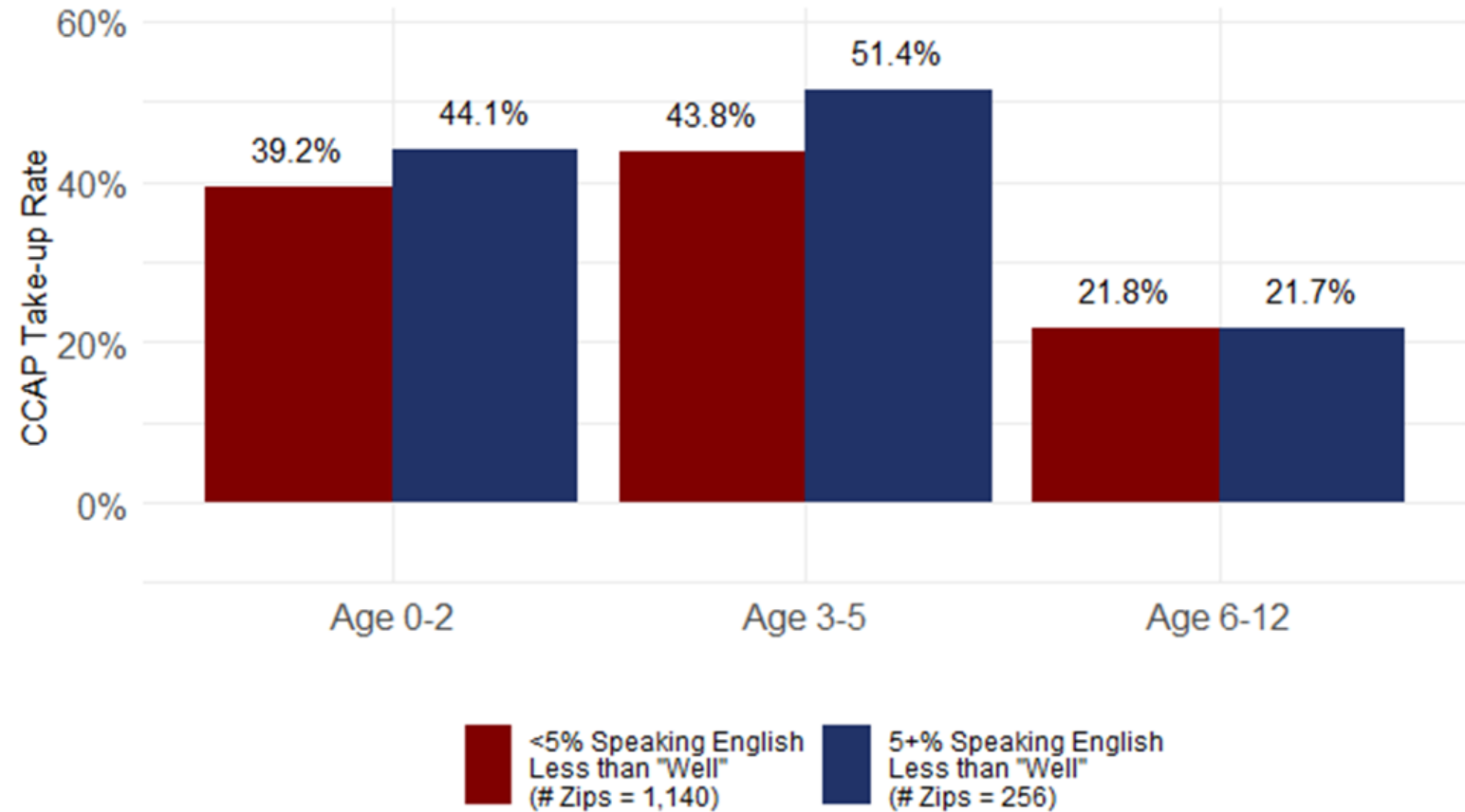


CCAP Take-Up by Zip Code Characteristics, 2023...

...Majority Race/Ethnic Composition

...English Language Proficiency

...Density of CCAP Eligibility

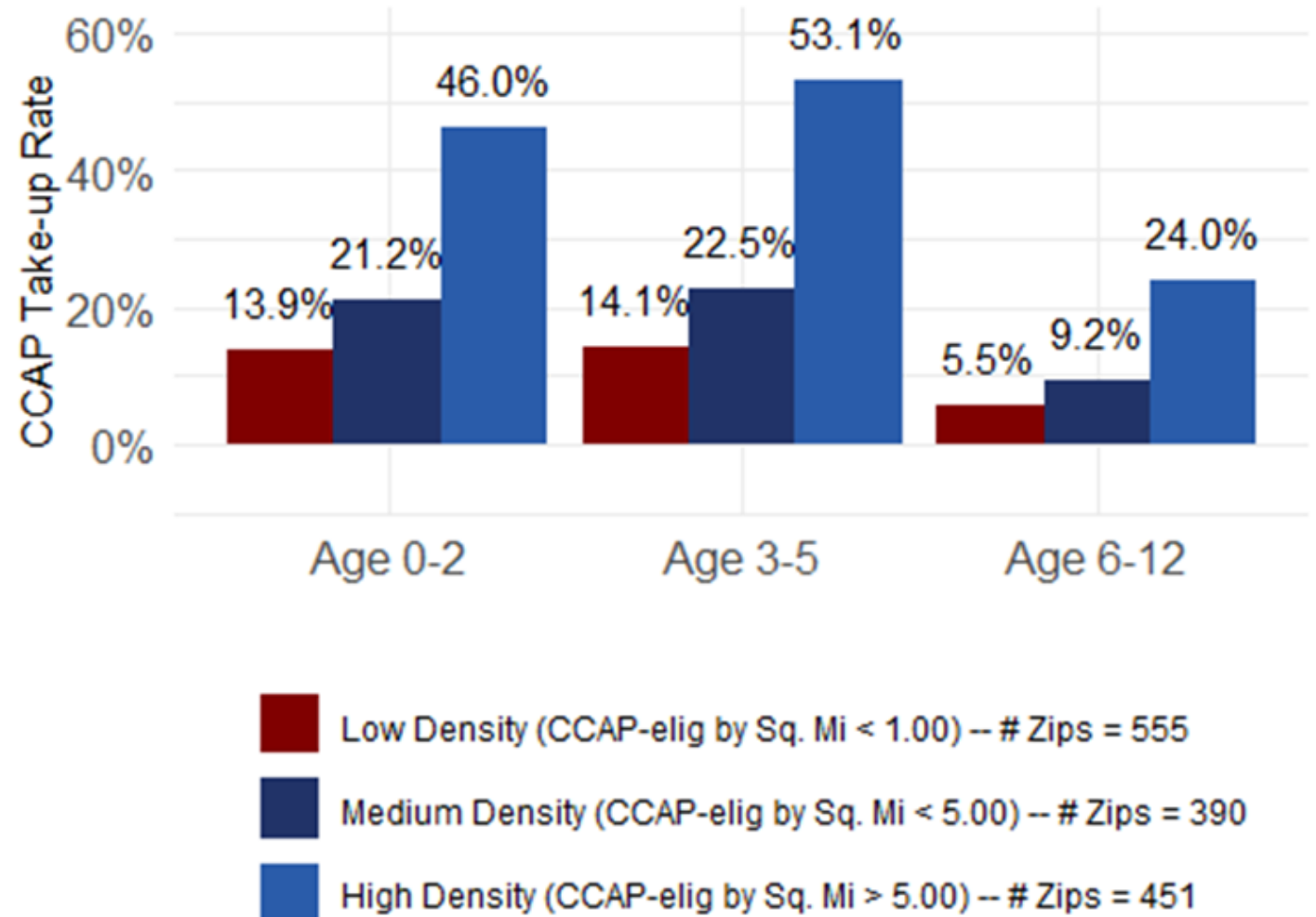


CCAP Take-Up by Zip Code Characteristics, 2023...

...Majority Race/Ethnic Composition

...English Language Proficiency

...Density of CCAP Eligibility



Summary of Findings

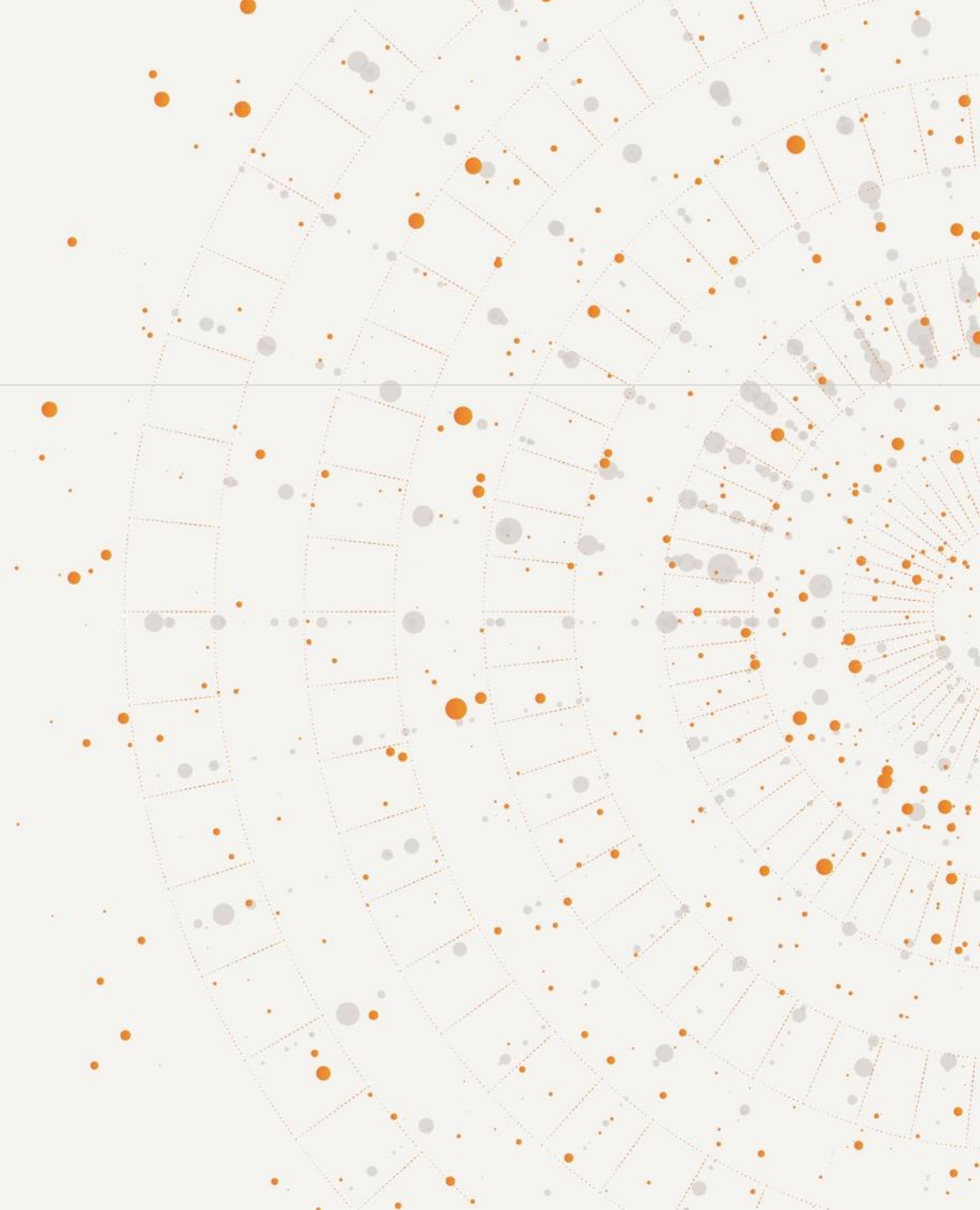
- Overall state-wide 2023 CCAP take-up rates are **42% for ages 0-2, 48% for 3-5, and 22% for 6-12.**
- CCAP take-up rates vary by child age and CCR&R region, with 20 to 60% for children 0-5 years and 10 to 30% for children 6-12. County level take-up demonstrates great variation.
- With a few exceptions, across all age ranges, counties with the highest take-up rates are **urban.**
- CCAP take-up rates are **highest in majority Black non-Hispanic zip codes**, followed by majority Hispanic and racially diverse zip codes. Majority white non-Hispanic areas show lowest take-up.
- Zip codes with lower rates of English proficiency have slightly higher CCAP take-up rates for children under age 6.
- **Increased geographic density** of CCAP-eligible families and CCAP providers is correlated with higher take-up rates, consistent with higher take-up in urban counties.

Potential Next Steps

- Important unanswered questions of contributing factors including geography, race/ethnicity, and provider supply.
- Continue this workstream in collaboration with DHS/DEC and IECAM through ILDS ECPDS and Layering Landscape.
- Expand analyses to examine details of supply side: proximity, type, and model of local providers, transportation networks, etc.
- Apply the approach to other human service programs.
- Continually update findings using reproducible research methods.



Questions & Discussion



Read the Report:

<https://www.chapinhall.org/research/understanding-child-care-assistance-in-illinois-who-is-enrolled-and-where/>

Thank you.

Bob Goerge

Senior Research Fellow
goerge-bob@norc.org

Leah Gjertson

Senior Research Scientist
gjertson-leah@norc.org

 Research You Can Trust™

 **NORC** at the
University of
Chicago