

P-20 Learning Renewal

April 1, 2021



Governor's Office of
Early Childhood Development

CHALLENGE

The COVID-19 pandemic has impacted all students and exacerbated existing challenges in our education system

Interruptions to traditional learning have impacted students both academically and social-emotionally

Lower-income students and students of color were more likely to experience extended periods of disrupted learning

The State of Illinois' response

- ❑ The Illinois P-20 Council pivoted its work to focus to learning recovery and social-emotional supports
- ❑ From November 2020 through February 2021, P-20 working groups convened 300 stakeholders, focus groups and issued surveys to seek input on response efforts
- ❑ With a plan in place, we're engaging state lawmakers to get feedback and facilitate ongoing partnerships

Education and Workforce Equity Act (P.A. 101-0654) let us lead the way:

The Illinois P-20 Council shall have all of the following duties:

(1) To make recommendations to do all of the following:

...To make recommendations for short-term and long-term learning recovery actions for public school students in this State in the wake of the COVID-19 pandemic.

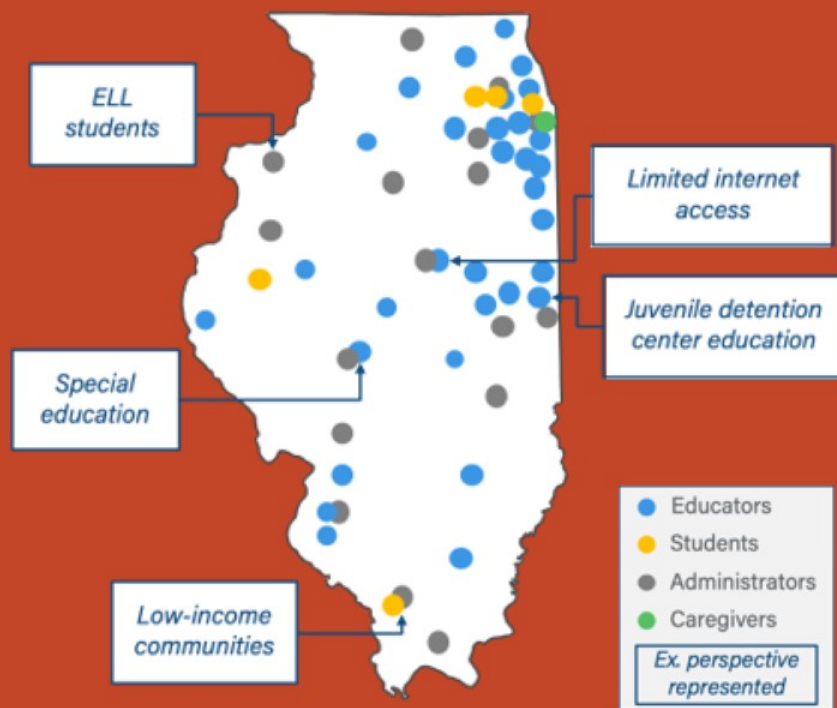
SOLUTION

Perspectives from 300+ educators, students & administrators across the state have been incorporated into the Learning Renewal Resource Guide

Note: Focus groups provided a diverse set of voices, though they may not be completely representative of perspectives throughout the entire state.

If you are interested in gathering input from your local teachers, educators, staff, etc., we have resources to help! Please contact us at lledrenewal@gmail.com.

Focus group volunteers: 255+ total educators (220+ from Teach Plus surveys and focus groups, additional 2 early childhood, 30 K-12, 6 higher education from P-20 focus groups); 11 total students (7 K-12, 4 higher education); 37 total administrators (28 PK-12, 9 higher education); 17 total caregivers



SOLUTION

Who contributed to this resource guide?



How you can help

- ❑ Share these resources with administrators and educators in your communities
- ❑ Help your local early childhood programs, school districts and higher education institutions connect with community organizations that can help
- ❑ Let us know about the successes and challenges that your community is experiencing
- ❑ We will be continuing these conversations in the P-20 Council and Early Learning Council

GOECD will lead the following learning renewal efforts:

- **Infant/Early Childhood Mental Health Consultation**
- **Technology Supports and Materials for Early Intervention Telehealth**
- **Enrollment “Campaign” for Early Childhood**

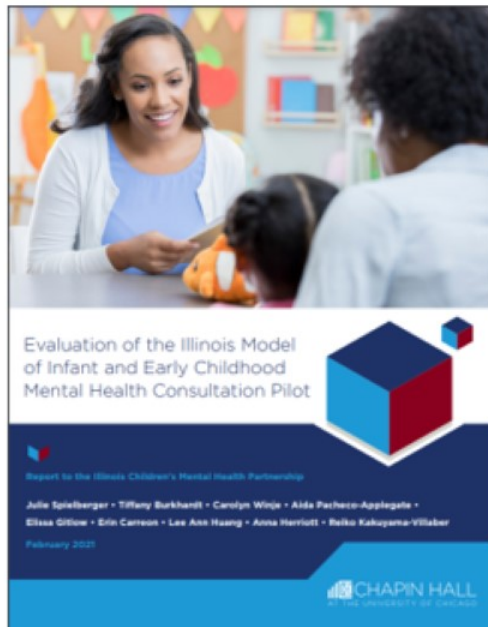
Infant and Early Childhood Mental Health Consultation

- Infant and Early Childhood Mental Health Consultation has been rooted in Illinois since the early 2000s across child- and family-serving programs
- In collaboration with Illinois Children's Mental Health Partnership, Illinois Network of Child Care Resource and Referral Agencies, Illinois Head Start Association, Illinois Association for Infant Mental Health, Chaddock/Caregiver Connections, City of Chicago's Department of Family and Support Services, Illinois Action for Children, Start Early, Irving B. Harris Foundation, and State Agency partners



Pilot Evaluation: Illinois Model of Infant/Early Childhood Mental Health Consultation

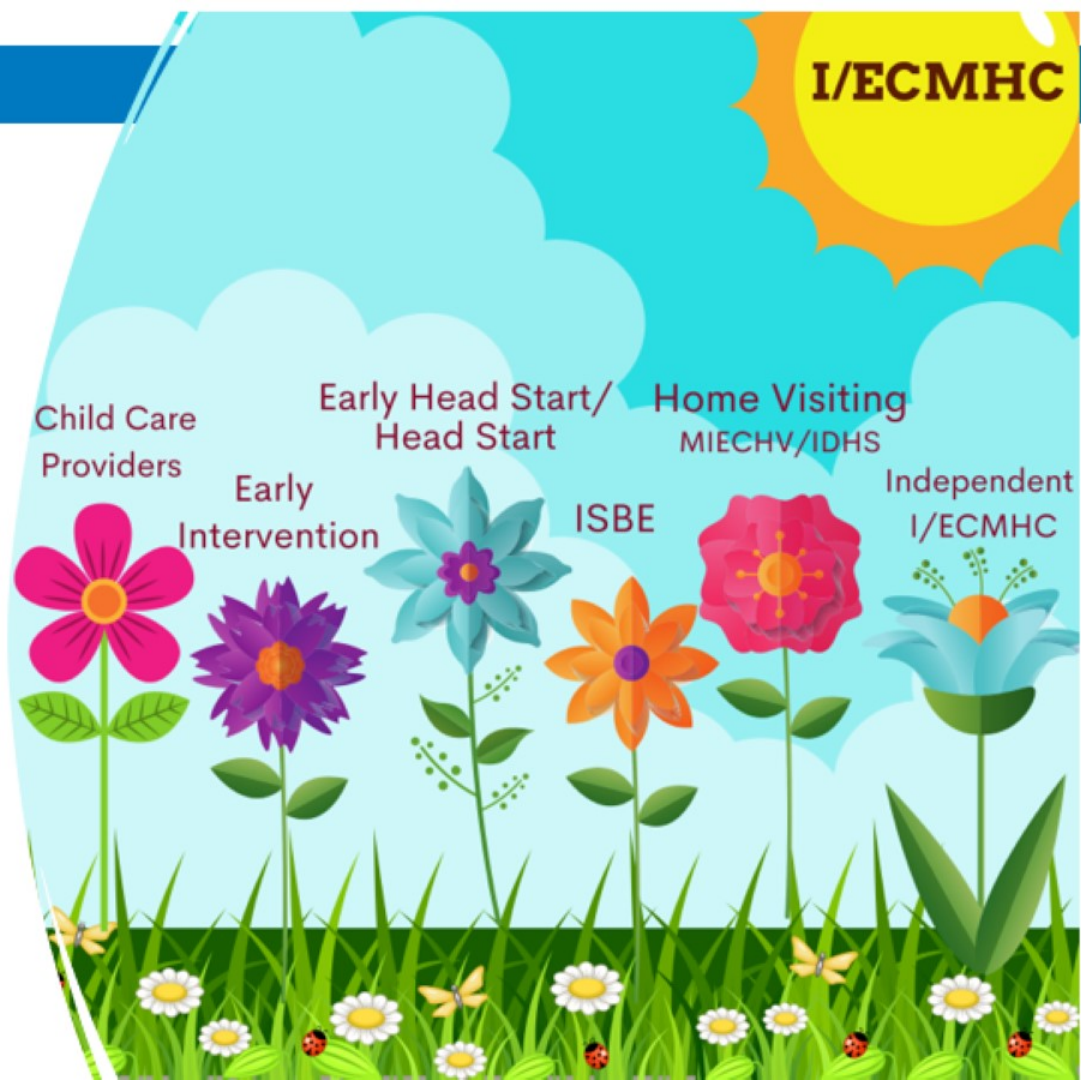
- First of its kind to measure I/ECMHC across multiple systems
- Preschool, center-based child care, home visiting programs
- 15 intervention, 8 control (23 sites total)
- Chicago (urban and suburban)
- Peoria (urban and suburban/rural)
- Need buy-in at all levels of the organization
- Consistent staff meetings



SOLUTION

Available Where Young Children Learn, Grow, and Play

Illinois is one of few states to offer Infant/Early Childhood Mental Health Consultation services across multiple systems that serve children and families.



Education and Workforce Equity Act (P.A. 101-0654)

- Trauma and toxic stress diminish a child's ability to thrive, which the COVID-19 pandemic has exacerbated and brought further into focus
- The COVID-19 pandemic has amplified the number of students who have experienced childhood trauma and highlighted preexisting inequities in school disciplinary practices that disproportionately impact Black and Brown students
- Access to infant and early childhood mental health services is critical to ensure the social and emotional well-being of this State's youngest children, particularly those children who have experienced trauma

Investing in Professional Development

- Illinois Legislative Black Caucus Education and Workforce Equity Act (Public Act 101-0654)
- GOECD intends to streamline the professional development of I/ECMHC
- Illinois will increase the number of Infant/Early Childhood Mental Health Consultants across the State
- Aiming to reduce the wait time for providers and making it easier to access this critical social-emotional support



State System Supports

Governor's Office of Early Childhood Development

- Facilitator of Statewide Leadership Team
- Promotes awareness of I/ECMHC
- Attends statewide policy meetings for inclusion of I/ECMHC into cross-systems work
- Collaborates with State Agencies to enhance and promote I/ECMHC

INCCRRA

- Professional development
- Orientation
- Facilitator of quarterly calls
- On-demand training
- Reflective Learning Groups
- Statewide Consultant Database



Investing in a Continuum of Support

- Promote trauma-informed, social-emotional responsive practices in early childhood programs and home visiting
- Enhanced screening, assessment, and early identification will activate the necessary educational supports for children and their caregivers
- Public awareness campaigns available in multiple languages will promote I/ECMHC to families, caregivers, and providers as a necessary component for building strong relationships rooted in resilience and foundational to children's education



Early Intervention (EI)



- Partnerships with Illinois Early Intervention Clearinghouse, Department of Human Services Bureau of Early Intervention
- Supports families of an infant or toddler with a disability or developmental delay
- Technology for Early Intervention telehealth
- Culturally responsive materials in multiple languages

CHALLENGE

Equitable access to EI telehealth visits

SOLUTION

Federal funds will address the inequities in accessing telehealth due to absence of technology and/or internet



EIC Technology Loan Program

The Illinois Early Intervention Clearinghouse is pleased to announce we are now loaning technology to help families in early intervention participate in live video visits, or telehealth. We have a selection of COVID-19 updates and resources to help families stay informed about early intervention services in Illinois available on our page, [Everyday Early Intervention During Coronavirus](#).



Available technology includes:

- iPad with a data plan (i.e., you are requesting a device for live video visits that also has an Internet plan)
- iPad without a data plan (i.e., you are requesting a device for live video visits; you already have Internet access)
- Hotspot (i.e., you have a device for live video visits but require Internet access)

CHALLENGE

Equitable access to materials

SOLUTION

- Federal funds will address the needs of linguistically diverse EI families
- Develop culturally responsive materials and videos in the languages most common among EI families: Spanish, Arabic, Polish, Russian, Urdu and Chinese (Mandarin)



Resources for Families

Getting Started in Early Intervention

Learn how to find out if your child is eligible for services under the Illinois Early Intervention Program and where to go from there.



Everyday Early Intervention During Coronavirus

Promote development during trying times with simple activities at home.



EIC Technology Loan Program

The Illinois Early Intervention Clearinghouse is loaning technology to help families in early intervention participate in live video visits, or telehealth.



Resource Guides

Topical guides to important books, videos, and Web resources available from the EI Clearinghouse.



Early Childhood Enrollment Campaign

CHALLENGE

Enrollment is down across early childhood education and care programs in Illinois

- Child Care Assistance Program
- Head Start/Early Head Start
- Preschool for All
- Kindergarten
- Home Visiting
- Early Intervention

SOLUTION

We need to strengthen our communication to families



Early Childhood Enrollment Campaign



Early Childhood Enrollment Campaign



- Statewide text messaging platform for families
 - Free
 - Developmentally appropriate
 - Culturally competent
 - Available in multiple languages
 - Supportive
 - Contextual
- Will allow for communication with Illinois families not currently enrolled in an early childhood program

Stay Connected and Updated

Visit our website for more information:

www.earlychildhood.illinois.gov

Subscribe to our newsletter to get the most updated information!



[COVID-19](#)

The health and well-being of children, families, and early childhood care and education providers is of utmost importance. Our COVID-19 resources pages provide links to information to help keep all Illinois residents, especially families, providers, and those who support children, informed.



[Illinois Early Learning Council](#)

The Early Learning Council (ELC), a public-private partnership created by Public Act 93-380, strengthens, coordinates and expands programs and services for children birth-to-five throughout Illinois. With a membership including senior state officials and non-government stakeholders appointed by the Governor, the ELC builds on current programs to ensure a comprehensive, statewide early learning system to improve the lives of Illinois children and families.



[Supports for Families](#)

Families can find care for their children in different places throughout the community. This care might be called child care, early learning, early care and education, early childhood education, or another name. Navigating options for care can be complicated. Here families will find answers to some of the most basic questions for finding and paying for care.

[Sign up](#) for our monthly newsletter.

[Upcoming Events](#)

[What's New](#)

P-20 Learning Renewal

